



Frankston Hospital Redevelopment Project

First Nations Public Art Commission Brief – Wind Mitigation Screen Design



Contents

1	Acknowledgment of Country	3
2	Frankston Hospital Redevelopment	3
3	Arts at the Frankston Hospital Redevelopment.....	3
4	Wind Mitigation Screens.....	4
4.1	Wind Mitigation Screens - Description	4
4.2	Artwork Parameters.....	4
4.3	Fabrication Parameters	4
4.4	Wind Mitigation Screens - Locations	6
4.5	Wind Mitigation Screens - Elevations.....	8
5	Design Strategy & Curatorial Themes.....	10
5.1	Frankston Hospital Design Strategy: Healing Country, Healing People	10
5.2	Wind Mitigation Screens Themes.....	10
6	Budgets	11
6.1	Concept Design Fees	11
6.2	Artist Fee	11
7	EOI and concept phase.....	11
8	Contracts, Title and Ownership	12
9	Intellectual Property Rights in Artwork	12
10	Decommissioning	13
11	Documenting of Artwork	13
12	Crediting of Artwork.....	13
13	Communications.....	14
14	Social Media, Publicity and Confidentiality Requirements Responsibilities	14
15	Schedule.....	15

1 Acknowledgment of Country

We acknowledge the traditional Owners of this Country – the Boon Wurrung/Bunurong people of the Kulin Nation. We recognise their continuing connection to land, water, and culture. We pay our respects to their Elders, past and present and to their emerging leaders.

2 Frankston Hospital Redevelopment

The Victorian Government is delivering a redevelopment of Frankston Hospital which will transform services at the hospital. The redevelopment will deliver expanded women's and children's services; an expansion of the emergency department to include a new mental health, alcohol and other drugs hub and a dedicated paediatric zone.

Once finished, the redeveloped hospital will have capacity to treat approximately 35,000 more patient episodes each year. This will cut wait times and reduce pressure on other Melbourne hospitals. Construction is underway, with main works expected to be completed in 2025.

3 Arts at the Frankston Hospital Redevelopment

Through a series of public art commissions Exemplar Health aims to -

- Create a welcoming, healing environment, which enhances the healthcare experience for all
- Create a visually coherent environment which is relevant to both people and place
- Reflect stories, themes and issues that are relevant to people and place
- Commission high quality, innovative and contemporary art by local and national artists which exists in harmony with the architecture and interior design
- Contribute to intuitive wayfinding
- Promote and celebrate First Nations Culture
- Promote and celebrate diversity and equality.

4 Wind Mitigation Screens

4.1 Wind Mitigation Screens - Description

This commission is for artworks that will be represented through laser cut perforations on corten steel wind mitigation screens located in the grounds around the hospital. These screens provide pedestrians with protection from the prevailing coastal winds.

These artworks will likely be one of the early elements that patients, families, visitors, and staff notice on arrival at the hospital via pedestrian crossings. It is vital that this artwork be welcoming, inclusive, uplifting and complement the landscape design.

4.2 Artwork Parameters

We are looking for four artworks, each designed to be represented on wind mitigation screens. The artworks should be designed to be represented on the following screen configurations:

- a 5-panel screen at 1500mm high - each panel is 1200mm wide, for a total screen width of 6000mm;
- a 3-panel screen at 1500mm high - each panel is 1200mm wide, for a total screen width of 3600mm;
- a 5-panel screen at 2000mm high - each panel is 1200mm wide, for a total screen width of 6000mm;
- and
- a 5-panel screen at 2500mm high - each panel is 1200mm wide, for a total screen width of 6000mm.

The artworks should be in an abstract, interpretive style that allows for seamless and versatile combinations across screening spans with varying length without appearing repetitive. Refer to details below for further information on screen sizing and materials. For locations requiring an uneven total number of panels, the panel design should be able to be adapted to function to a shorter panel configuration.

The theme for the artwork is set out in section 5 below.

4.3 Fabrication Parameters

The artwork will be fabricated through laser cut perforations into wind mitigation screens. The fabrication process will conform to the following parameters to ensure the performance of the wind mitigation screens:

- All screens will have a maximum porosity of 30%.
- Perforations will not exceed 50mm. The perforations will be randomly distributed and designed as modular components, ensuring that the wind mitigation screens across the site maintain a unique and non-repetitive appearance. The size and randomisation will also mitigate any accelerated wind noise through the perforations.
- It is expected that the fabricator and the artist (with the support of the curator) will work together on the representation of the artwork through the perforations.
- Corten screen panels are 1200mm wide.

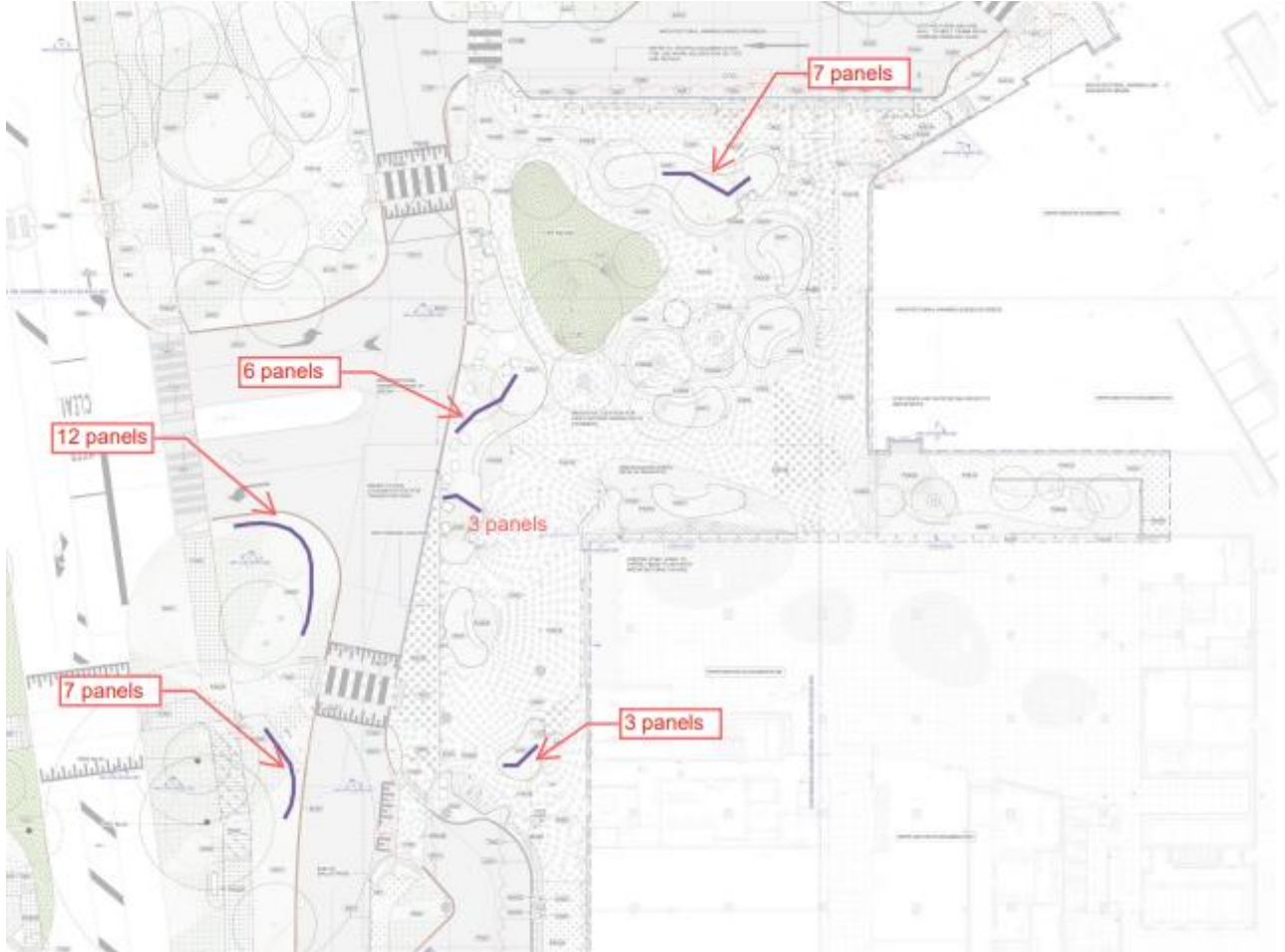
- Corten screen panel heights are 1500mm, 2000mm or 2500mm (refer to wind mitigation locations under section 4.4)
 - Purple: 1500mm high – 39 panels
 - Orange: 2000mm high – 20 panels
 - Red: 2500mm high – 5 panels

Artistic images rendering below references general location and intent of the screens.

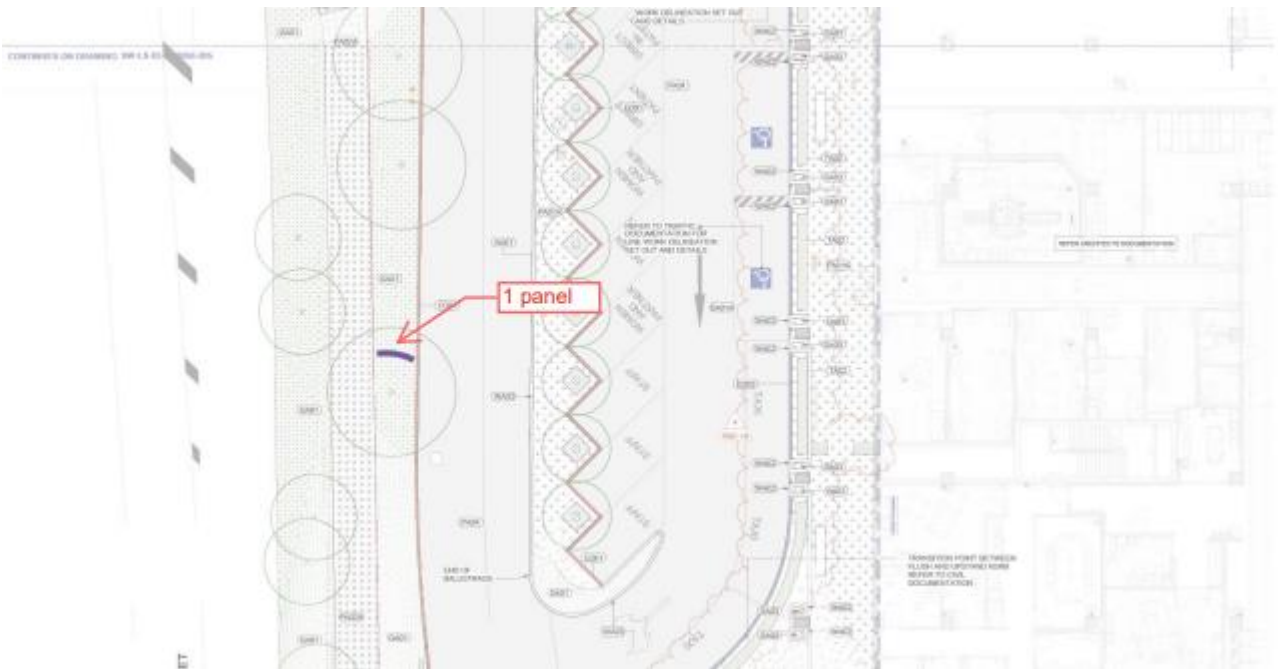


4.4 Wind Mitigation Screens - Locations

Arrival Garden: Purple = 1500mm high screens



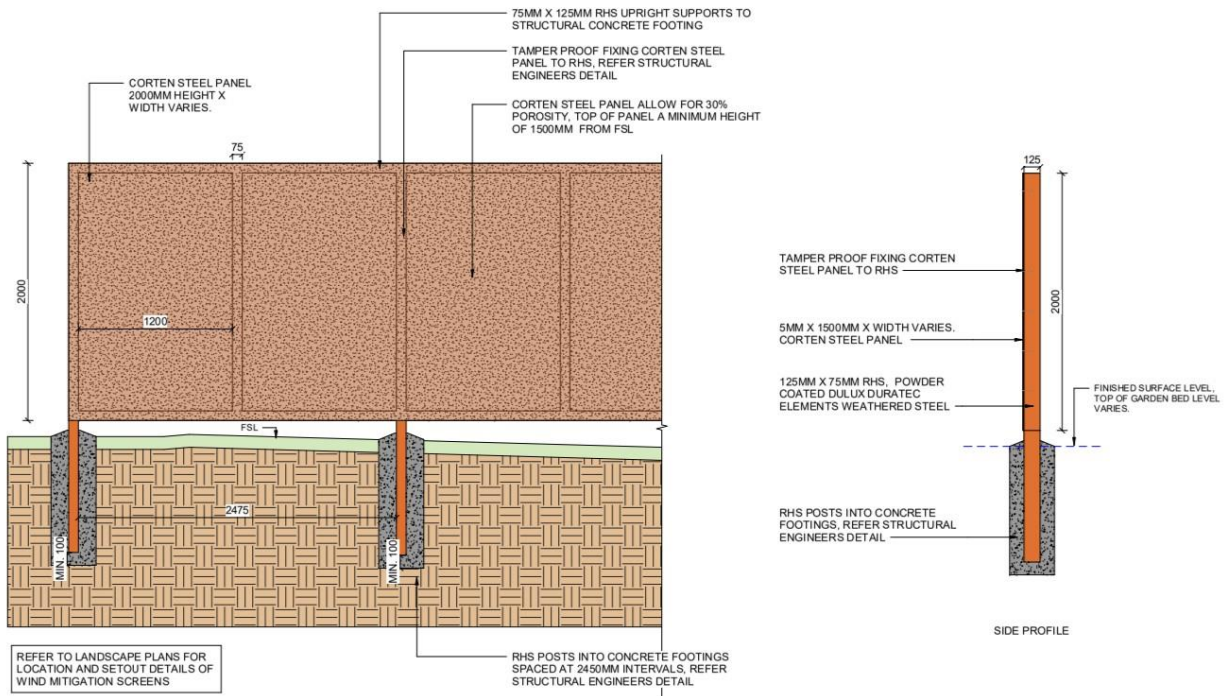
Central: Purple = 1500mm high screen



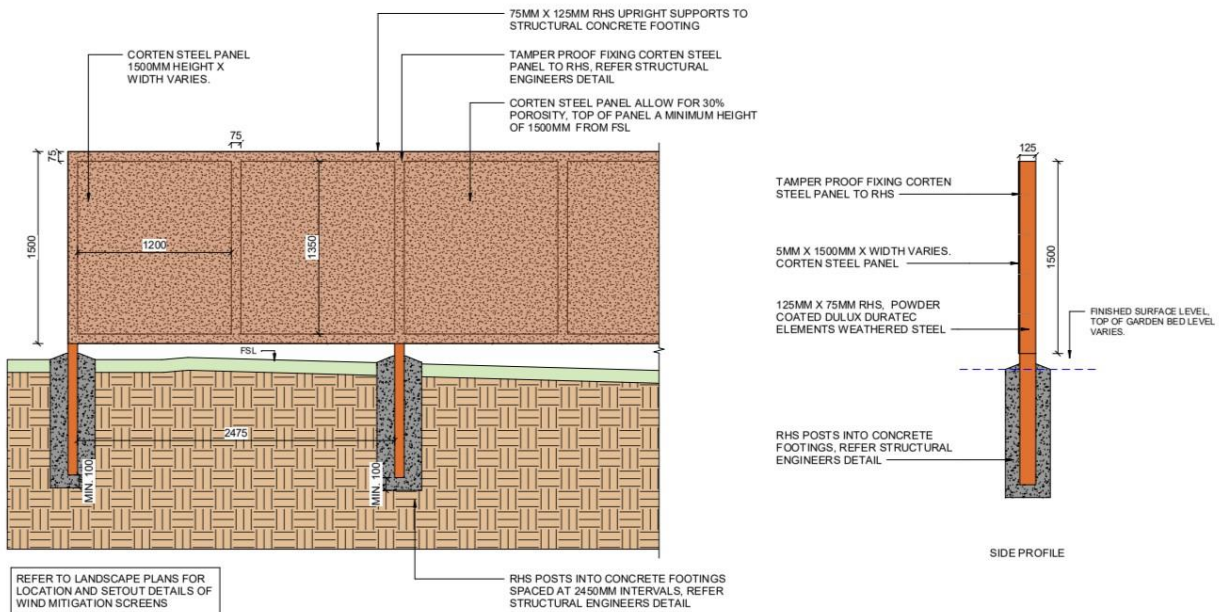
Southern Road: Red = 2500mm high screens, Orange= 2000mm high screens



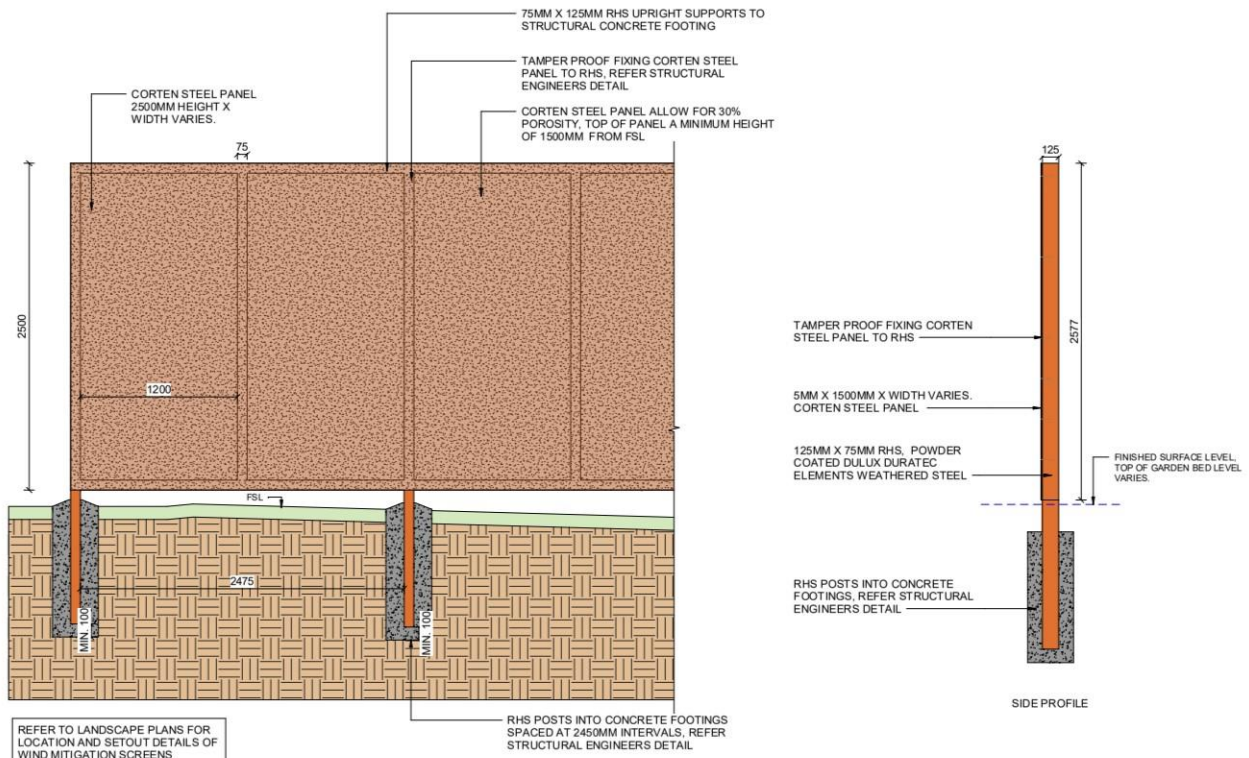
4.5 Wind Mitigation Screens - Elevations



3 MISCELLANEOUS - SC01B - STRAIGHT SCREEN DETAIL 2000mm
1:20



2 MISCELLANEOUS - SC01A - STRAIGHT SCREEN DETAIL 1500mm
1:20



7 MISCELLANEOUS - SC01C- STRAIGHT SCREEN DETAIL 2500mm

1:20

5 Design Strategy & Curatorial Themes

5.1 Frankston Hospital Design Strategy: Healing Country, Healing People

The overarching theme for the Redevelopment is 'Healing Country, Healing People'. Country encompasses all living things, the land, and the waters thus the health of Country is directly linked to the health of people living on it - healing Country, heals people.

5.2 Wind Mitigation Screens Themes

The screens provide an opportunity for stories and narratives to be visually represented throughout the hospital grounds. The artwork should reinforce the design narratives that Exemplar Health have developed, including the following:

- The significance of the Kananook creek and Carrum Carrum wetlands surrounding the site and the historical landscape of the region.
- The importance of the coastal environment as a source of food, water, fire and shelter that has sustained the Bunurong people for thousands of years.
- Representations of local ecology including native/indigenous flora and fauna.

The artwork for the screens could explore themes directly related to the exploration of wind in ecology:

- The dynamic coastal environment and its constant adaptation to changing conditions.
- The impact of wind on plant growth, reproduction, distribution, death, and evolution.
- The role of wind in shaping the landscape forms of dunes and creek depressions in Frankston.

The artwork should complement the broader landscape design intent for the hospital, which is inspired by the Exemplar Health design narratives and includes the following elements:

- A palette of materials that strengthens the connection to the local Country, incorporating finishes, structures, and materials that reflect the journey from ocean to land and the tonal qualities of the coastal ecology.
- Exploration of eel migration patterns through floor narratives in the Arrival Garden.
- A predominantly native and indigenous planting palette, complemented by select exotic species to promote biodiversity across the site.
- A layered public realm environment drawing inspiration from the historic landscape setting and wider wetlands and heathlands context, interpretive and culturally rich. The forms of the landscape are derived from inspiration of the Carrum Carrum wetlands. They inspire more natural formations at the Hastings Road/Yuille Street side that slowly urbanise towards the main entrance to encourage intuitive wayfinding and equitable access through the Arrival Garden.

6 Budgets

6.1 Concept Design Fees

Shortlisted artists will each be paid a concept design fee of \$2,000 which will include development and submission of a concept design in response to this Public Art Commission Brief.

6.2 Artist Fee

The preferred artist will be paid a commission fee of \$7,500. This budget is to cover the following:

- Artists fees (inclusive of superannuation but excluding concept design fees) – includes all time required to complete the commission, meetings etc
- Visualisations
- Any other costs incurred to create the artwork to be integrated into the screen

NB This does not include the fabrication of the artworks into the screens, or the screens themselves.

7 EOI and concept phase

Exemplar Health are inviting First Nations artists to submit expressions of interest (EOI) in response to this brief. Submissions will be accepted from 4 November 2024 to 29 November 2024, and no entries will be accepted after this time.

Artists should send:

- up to ten examples of past artworks
- a CV
- details of any connection to people or place, if applicable
- Short written summary of why this project is of interest to you, 500 words max

All of the above should be sent to victoria@tprojects.co **Artists are specifically instructed not to submit any drawings or concepts. Please only submit the information requested – additional images or text will not be reviewed.

A shortlist of four artists will be selected by the Project Artwork Selection Panel and project curator, T Projects to proceed to develop concepts.

Concepts are to include

- A short-written description of the artworks and how they respond to this brief
- Artworks, can be drawing, painting, print or other medium

Concept design fees of \$2,000 will be paid to shortlisted artists on receipt of each concept that meets all requirements.

Concept design submissions will be reviewed and assessed by the Project Artwork Selection Panel and project curator, T Projects, based on previous work, artist's profile and connection to country with one artist being selected as preferred.

The preferred concept design will be selected to be further developed and integrated into the wind mitigation screens.

8 Contracts, Title and Ownership

The selected artist will enter into a public art commission contract with Exemplar Health to deliver the preferred concept design.

Title in the final artwork will not pass until:

- The final artwork has been accepted by Exemplar Health
- All payments due to the Artist have been made.

9 Intellectual Property Rights in Artwork

For the purposes of this section, "Intellectual Property Rights" means all current and future intellectual property and proprietary rights (whether registered or unregistered), including:

- copyrights, including moral rights and performers rights
- registered and unregistered trade or service marks
- any right to have information kept confidential
- registered patents

The Developed Material (including but not limited to the Concept Design, the Detailed Design, and the Final Artwork) must be original to the artist, or otherwise if the Detailed Design includes pre-existing Intellectual Property Rights, or Intellectual Property Rights authored or owned by a third-party, that the artists has arranged in writing for all rights and permissions necessary to use the Intellectual Property Rights as contemplated by this brief, including, but not limited to, the granting of the licence to Exemplar Health provided below.

The artist grants Exemplar Health an exclusive, worldwide, royalty free, and irrevocable licence to use and reproduce the Developed Material (including but not limited to the Concept Design, the Detailed Design, and the Final Artwork) for the purposes of:

- displaying the final artwork
- generally promoting the project, the artwork, of the project curators, and/or the Exemplar Health
- publishing reproductions of the artwork for the purposes of the Project, the project curators, and/or Exemplar Health
- use in any financial and annual reports, presentations, website, and marketing materials of the project curators, and/or Exemplar Health,

with such licence including the right to grant an equivalent sub-licence to the State of Victoria.

The artist must not grant anyone other than Exemplar Health a licence to use the Detailed Design, nor assign the Intellectual Property Rights in the Detailed Design to anyone other than Exemplar Health, without the express permission of Exemplar Health. The only exception to this would be where the Artist's concept is not accepted to proceed or Detailed Design is not agreed to proceed.

Copyright/Intellectual Property Rights in materials produced for the Commission will be dealt with in a manner consistent with the Whole of Victorian Government Intellectual Property Policy (2012). Accordingly, the Artist will retain ownership of the Intellectual Property Rights in the Developed Material produced for the Commission; subject to the Artist granting to Exemplar Health the licence explained above.

10 Decommissioning

Public artworks have a limited life span and hospital art commissions will be decommissioned in the following circumstances:

- The cost of repairing the artwork exceeds the original value of the artwork
- The artwork has been vandalised, or parts have been removed, to the extent that it is irreparable, or the reputation of the artist is at risk
- It has outlived its required 25 year lifespan

In any of these circumstances the moral rights of the artist will be respected under the Copyright Act 1968 and correct procedures followed with respect to the artists' reputation, attribution, and as the first copyright owner of the work. Artists will always be contacted prior to de-accessioning a work. If an artwork needs to be decommissioned the artwork will be fully documented for archival purposes.

11 Documenting of Artwork

The final artwork may be documented by Exemplar Health. All images will be shared with the artist and project curator for their full use. The sharing of documentary images and select information concerning the commission with third party organisations for presentations, education or academic purposes, knowledge sharing, or archiving, will be at the discretion of Exemplar Health. Appropriate consent forms will be provided with parental consent sought for any imagery of children under the age of 16.

12 Crediting of Artwork

In all instances, Exemplar Health and the Victorian Health Building Authority will correctly credit the artist as the creator of the artwork, and the curator as the curator of the artworks, in a reasonably prominent position near the artwork and in all marketing and communications materials issued by either Exemplar Health or the

Victorian Health Building Authority. The artist should indicate to Exemplar Health and The Victorian Health Building Authority how they wish to be credited.

If the artwork involves the use of any Indigenous cultural intellectual property, Exemplar Health and The Victorian Health Building Authority will display acknowledgement in a reasonably prominent position near the installed art/design work which identifies the appropriate custodial interest and permitted use.

13 Communications

In order to engage and inform the hospital community about the public art commissioning process and outcomes, Exemplar Health and the Victorian Health Building Authority will feature information about the art commission within the wider marketing and communications in relation to the Project.

14 Social Media, Publicity and Confidentiality Requirements Responsibilities

Artists should be aware that the concept designs and preferred artwork may be shared on the various project delivery teams, Victorian Health Building Authority and other state government web pages and social media channels. Neither Exemplar Health or the Victorian Health Building Authority are responsible for any reposting of images or information outside channels directly associated with the project. Where practical, Exemplar Health, the Victorian Health Building Authority and project delivery teams will endeavour to appropriately tag and credit images of the artwork.

Artists are required to keep all aspects of this commission confidential. Artists must not directly or indirectly share details of the commission, including via media or social media, without prior written approval from Exemplar Health. Artists should be willing to participate in media, social media, and events to promote their work in context of the project, as required by either Exemplar Health or the Victorian Health Building Authority. Appropriate media support and training can be provided if deemed necessary.

15 Schedule

Stage	Activity	Dates
1	EOI advertised & submission period	4 November to 29 November 2024
2	Online curator led Q&A sessions	7, 14, 21 November at 5pm
3	Submission period closes	29 November 2024
4	Curatorial longlisting	6 December 2024
5	Selection Panel meeting – 4 shortlisted artists selected	By 20 December 2024
6	Concept development period	January – February 2025
7	Selection Panel meeting – Concepts and artist presentations, preferred artist recommendation reached	By late February 2025
8	Artist contracted	March 2025
9	Announcement of selected artist	April 2025
10	Design completed	May 2025